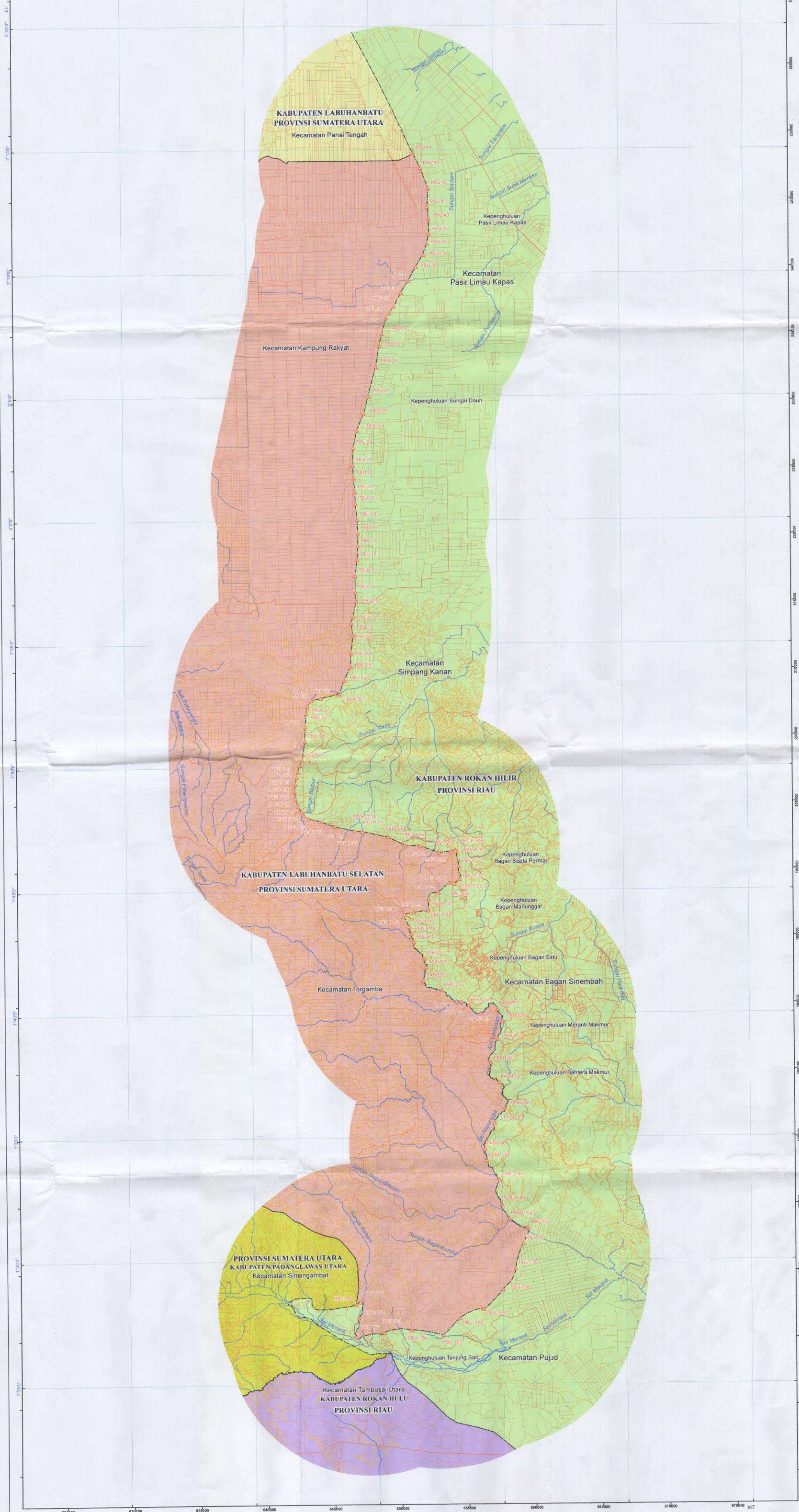


100°120' BT 100°150' 100°200' 100°250' 100°300' 100°330'



LAMPIRAN PERATURAN MENTERI DALAM NEGERI REPUBLIK INDONESIA NOMOR : 37 TAHUN 2018 TENTANG BATA DAERAH KABUPATEN LABUHAN BATU SELATAN PROVINSI SUMATERA UTARA DENGAN KABUPATEN ROKAN HILIR PROVINSI RIAU



MENTERI DALAM NEGERI REPUBLIK INDONESIA  
**PETA BATAS DAERAH**  
KABUPATEN LABUHAN BATU SELATAN PROVINSI SUMATERA UTARA  
DENGAN KABUPATEN ROKAN HILIR PROVINSI RIAU



SKALA 1:100.000

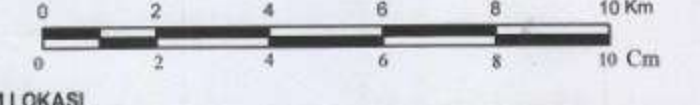


DIAGRAM LOKASI



PROYEKSI  
Sistem Grid : Grid Geografis dan Grid Universal Transverse Mercator  
Datum : WGS - 1984  
Zona : 47 N  
Satuan Tinggi : Meter  
Selang Kontor : 25 meter

KETERANGAN RIWAYAT  
1. Peta Reputasi Indonesia Skala 1:50.000 Produk Badan Informasi Geospasial Tahun 2016

LEGENDA

- ▲ : Pilar
- - - : Batas Provinsi
- - - : Batas Kabupaten
- - - : Jalan
- ~ : Sungai
- : Kontor

DAFTAR KOORDINAT PILAR BATAS

NO	PILAR	LINTANG	Bujur	X	Y
1	PBU 44	2° 14' 52.718" LU	100° 21' 45.305" BT	65120	248541
2	PBU 43	2° 14' 15.778" LU	100° 22' 02.847" BT	652063	247407
3	PBU 42	2° 13' 26.757" LU	100° 22' 21.542" BT	652642	245902
4	PBU 41	2° 12' 41.142" LU	100° 22' 19.137" BT	652569	244501
5	PBU 40	2° 12' 13.235" LU	100° 22' 22.057" BT	652660	243644
6	PBU 39	2° 11' 35.041" LU	100° 22' 22.507" BT	652675	242471
7	PBU 38	2° 11' 12.482" LU	100° 22' 17.017" BT	652506	241778
8	PBU 37	2° 10' 46.084" LU	100° 22' 07.866" BT	652224	240967
9	PBU 36	2° 10' 17.544" LU	100° 21' 50.718" BT	651695	240090
10	PBU 35	2° 09' 42.884" LU	100° 21' 32.045" BT	651119	239025
11	PBU 34	2° 09' 14.767" LU	100° 21' 14.154" BT	650567	238161
12	PBU 33	2° 08' 40.496" LU	100° 20' 56.808" BT	650032	237108
13	PBU 32	2° 08' 24.291" LU	100° 20' 45.199" BT	649674	236610
14	PBU 31	2° 08' 14.106" LU	100° 20' 37.883" BT	649448	236297
15	PBU 30	2° 07' 33.056" LU	100° 20' 27.232" BT	649120	235036
16	PBU 29	2° 07' 04.929" LU	100° 20' 20.475" BT	648912	234172
17	PBU 28	2° 06' 13.165" LU	100° 20' 11.798" BT	648645	232582
18	PBU 27	2° 05' 02.589" LU	100° 19' 52.570" BT	648063	230414
19	PBU 26	2° 04' 18.804" LU	100° 19' 41.788" BT	647721	229069
20	PBU 25	2° 03' 39.582" LU	100° 19' 24.667" BT	647193	227864
21	PBU 24	2° 02' 57.618" LU	100° 19' 15.830" BT	646921	226575
22	PBU 23	2° 02' 14.736" LU	100° 19' 13.853" BT	646861	225258
23	PBU 22	2° 01' 43.541" LU	100° 19' 15.899" BT	646925	224300
24	PBU 21	2° 01' 09.382" LU	100° 19' 19.107" BT	647025	223251
25	PBU 20	2° 00' 41.997" LU	100° 19' 19.700" BT	647044	222410
26	PBU 19	2° 00' 02.920" LU	100° 19' 23.908" BT	647175	221210
27	PBU 18	1° 59' 29.967" LU	100° 19' 24.500" BT	647208	220198
28	PBU 17	1° 58' 59.024" LU	100° 19' 24.826" BT	647205	219248
29	PBU 16	1° 58' 25.172" LU	100° 19' 23.183" BT	647155	218208
30	PBU 15	1° 57' 46.819" LU	100° 19' 18.169" BT	647001	217030
31	PBU 14	1° 57' 05.955" LU	100° 19' 18.072" BT	646999	215775
32	PBU 13	1° 56' 45.765" LU	100° 19' 19.739" BT	647051	215155
33	PBU 12	1° 56' 07.772" LU	100° 19' 12.429" BT	646826	213988
34	PBU 11	1° 55' 51.625" LU	100° 19' 07.594" BT	646677	213492
35	PBU 10	1° 55' 22.578" LU	100° 19' 11.261" BT	646791	212600
36	PBU 09	1° 54' 39.438" LU	100° 19' 06.503" BT	646645	211725
37	PBU 08	1° 54' 06.324" LU	100° 19' 05.151" BT	646604	210258
38	PBU 07	1° 53' 33.352" LU	100° 18' 48.726" BT	646105	209245
39	PBU 06	1° 53' 00.897" LU	100° 18' 37.562" BT	645753	208248
40	PBU 05	1° 52' 44.732" LU	100° 17' 52.864" BT	644372	207918
41	PBU 04	1° 52' 44.732" LU	100° 17' 29.495" BT	643650	207750
42	PBU 03	1° 52' 31.649" LU	100° 17' 19.971" BT	643356	207348
43	PBU 02	1° 52' 14.199" LU	100° 17' 16.787" BT	643258	206812
44	PBU 01	1° 51' 41.606" LU	100° 17' 14.077" BT	643175	205811
45	PBU 08	1° 51' 05.855" LU	100° 17' 12.983" BT	643142	204713
46	PBU 09	1° 50' 18.416" LU	100° 17' 07.157" BT	642963	203256
47	PBU 10	1° 50' 05.461" LU	100° 17' 00.837" BT	642768	202658
48	PBU 11	1° 49' 50.584" LU	100° 16' 55.940" BT	642617	202401
49	PBU 12	1° 49' 37.073" LU	100° 16' 52.468" BT	642510	201986
50	PBU 13	1° 49' 20.306" LU	100° 16' 49.705" BT	642425	201471
51	PBU 14	1° 49' 03.310" LU	100° 16' 47.558" BT	642359	200949
52	PBU 15	1° 48' 44.846" LU	100° 16' 49.486" BT	642419	200382
53	PBU 16	1° 48' 26.966" LU	100° 16' 55.525" BT	642606	199833
54	PBU 17	1° 48' 12.079" LU	100° 17' 03.605" BT	642856	199376
55	PBU 18	1° 48' 04.668" LU	100° 17' 09.942" BT	643165	199149
56	PBU 19	1° 47' 55.949" LU	100° 17' 20.809" BT	643388	198881
57	PBU 20	1° 47' 49.156" LU	100° 17' 48.439" BT	644242	198673
58	PBU 21	1° 47' 37.085" LU	100° 18' 21.794" BT	645273	198303
59	PBU 22	1° 47' 25.914" LU	100° 19' 10.325" BT	646773	197961
60	PBU 23A	1° 47' 24.696" LU	100° 19' 27.830" BT	647314	197924
61	PBU 23	1° 47' 23.912" LU	100° 19' 31.422" BT	647425	197900
62	PBU 24	1° 47' 10.518" LU	100° 20' 31.438" BT	649280	197490
63	PBU 25	1° 46' 49.648" LU	100° 21' 14.266" BT	650604	196850
64	PBU 26	1° 46' 48.189" LU	100° 21' 48.921" BT	651675	196096
65	PBU 27	1° 46' 32.494" LU	100° 22' 33.403" BT	653050	196225
66	PBU 28	1° 46' 34.915" LU	100° 23' 02.203" BT	653940	196400
67	PBU 30A	1° 46' 40.051" LU	100° 23' 13.597" BT	654292	196558
68	PBU 30	1° 46' 37.185" LU	100° 23' 14.728" BT	654327	196470
69	PBU 31	1° 45' 59.083" LU	100° 23' 21.980" BT	654552	195300
70	PBU 32	1° 45' 27.662" LU	100° 23' 23.154" BT	654589	194335
71	PBU 33	1° 45' 16.112" LU	100° 23' 10.558" BT	654200	193980
72	PBU 33A	1° 45' 20.114" LU	100° 23' 06.684" BT	654080	194103
73	PBU 34	1° 45' 19.215" LU	100° 22' 57.908" BT	653809	194075
74	PBU 35	1° 44' 55.628" LU	100° 22' 32.037" BT	653010	193250
75	PBU 37	1° 44' 40.667" LU	100° 22' 07.952" BT	652266	192890
76	PBU 38	1° 44' 12.177" LU	100° 22' 07.414" BT	652250	192015
77	PBU 39	1° 44' 07.156" LU	100° 21' 31.817" BT	651150	191860
78	PBU 41/LB	1° 44' 02.300" LU	100° 21' 09.700" BT	650467	191710
79	PBU 42	1° 43' 56.899" LU	100° 21' 06.801" BT	650377	191544
80	PBU 43	1° 43' 32.401" LU	100° 21' 21.100" BT	650820	190792
81	PBU 44	1° 43' 15.301" LU	100° 21' 25.999" BT	650971	190267
82	PBU 45	1° 42' 55.555" LU	100° 21' 31.584" BT	651144	189661
83	PBU 47	1° 42' 15.300" LU	100° 21' 55.901" BT	651897	188425
84	PBU 48	1° 41' 54.100" LU	100° 21' 59.602" BT	652012	187774
85	PBU 50	1° 41' 21.001" LU	100° 21' 54.299" BT	651848	186758
86	PBU 51	1° 40' 57.900" LU	100° 22' 38.201" BT	653206	186049
87	PBU 54	1° 40' 30.101" LU	100° 23' 12.800" BT	654276	185196
88	PBU 52	1° 40' 29.899" LU	100° 23' 26.300" BT	654693	185190
89	PBU 53	1° 40' 20.201" LU	100° 23' 43.400" BT	655222	184893
90	PBU 60	1° 40' 01.499" LU	100° 24' 10.800" BT	656069	184319
91	PBU 55	1° 40' 11.201" LU	100° 24' 51.800" BT	657336	184618
92	PBU 56	1° 39' 42.401" LU	100° 25' 03.900" BT	657710	183734
93	PBU 57	1° 38' 58.700" LU	100° 24' 51.700" BT	657334	182391
94	PBU 58	1° 38' 02.901" LU	100° 24' 34.600" BT	656807	180677
95	PBU 59	1° 37' 13.199" LU	100° 24' 54.601" BT	657426	179151
96	PBU 62	1° 36' 12.060" LU	100° 25' 07.748" BT	657834	177273
97	PBU 63	1° 35' 35.902" LU	100° 24' 42.501" BT	657054	176162
98	PBU 66	1° 34' 32.099" LU	100° 24' 19.101" BT	656332	174202
99	PBU 165	1° 34' 03.698" LU	100° 24' 23.400" BT	656466	173330
100	PBU 164	1° 33' 15.800" LU	100° 24' 53.601" BT	657400	171860
101	PBU 163	1° 32' 16.800" LU	100° 24' 58.000" BT	657537	170948
102	PBU 162	1° 31' 41.800" LU	100° 25' 16.800" BT	658095	169873
103	PBU 161	1° 31' 15.200" LU	100° 25' 00.800" BT	659480	168280
104	PBU 160	1° 30' 41.501" LU	100° 25' 49.400" BT	659128	167122
105	PBU 159	1° 29' 40.402" LU	100° 25' 30.601" BT	658548	165245
106	PBU 158	1° 28' 49.300" LU	100° 24' 59.901" BT	657600	163675
107	PBU 157	1° 28' 02.399" LU	100° 24' 11.599" BT	656108	162234
108	PBU 156	1° 27' 41.400" LU	100° 23' 15.799" BT	654384	161588
109	PBU 155	1° 26' 59.248" LU	100° 22' 35.674" BT	653145	160292
110	PBU 154	1° 27' 12.679" LU	100° 21' 17.239" BT	650720	160703
111	PBU 153	1° 27' 05.600" LU	100° 20' 12.600" BT	648722	160485
112	PBU 152	1° 26' 54.999" LU	100° 19' 05.999" BT	646664	160158
113	PBU 151	1° 27' 42.098" LU	100° 19' 11.302" BT	646827	161605
114	PBU 150	1° 28' 25.824" LU	100° 19' 19.747" BT	647087	162948
115	PBU 149	1° 28' 15.067" LU	100° 19' 05.131" BT	646636	162617

MENTERI DALAM NEGERI  
REPUBLIK INDONESIA,  
td  
TJAHJO KUMOLO

Salinan sesuai dengan aslinya  
Kepala Biro Hukum,  
  
Dr. Widodo Sigit Pudjianto, SH, MH  
Pembina Utama Madya (IV/d)  
NIP. 19590203 198903 001.